

# What are SKYE Clubs?

SKYE Clubs are groups of young people who meet together each week to identify community problems, brainstorm, plan and implement community service and social enterprise projects.

**Goal:** Female and male youth are empowered as active citizens, and equipped to transition well to adulthood.



2 - 3 SKYE Club Leader



Youth wants to  
improve themselves  
and their  
communities

Age: 18 - 26



SKYE Club Members  
10-25 members

**The SKYE Club  
model has four  
general learning  
objectives:**

- Active citizenship
- Leadership
- Employability
- Social entrepreneurship

World Vision

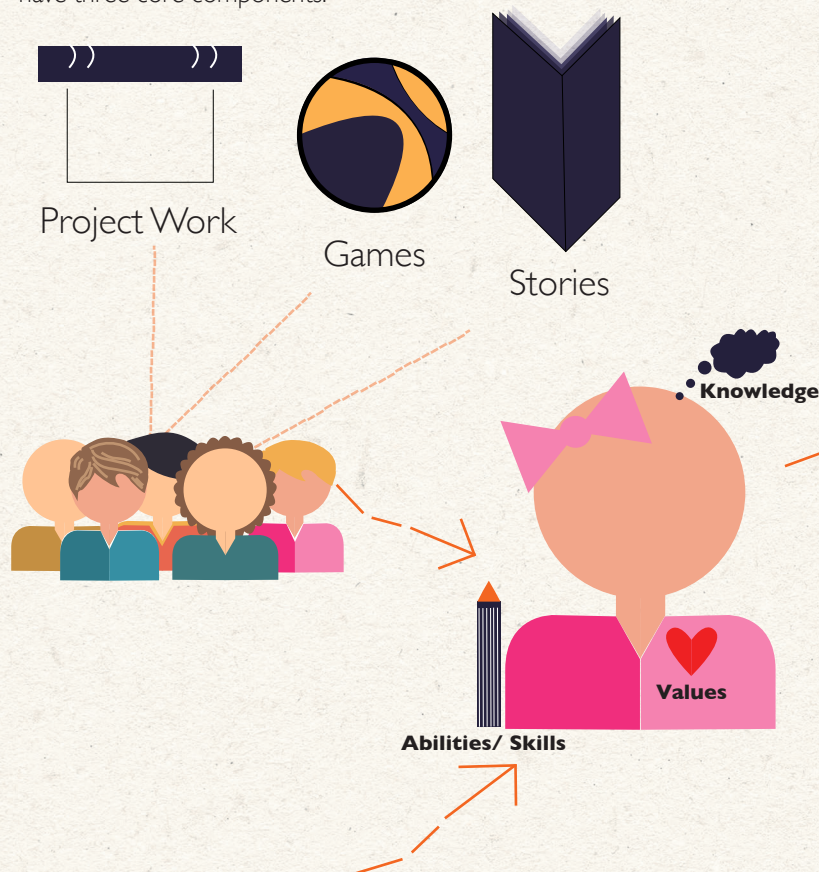




The SKYE Club model is an integrated approach that supports youth to develop the skills, behaviors, and attitudes necessary to obtain decent, durable livelihoods and participate constructively in their communities. This is facilitated through number of interventions:

## Club Meetings

SKYE Club members attend weekly meetings – meetings are guided by a curriculum based on experiential learning methodologies. Through meetings members cultivate competencies in the areas of active citizenship, leadership, employability and entrepreneurship. Meetings have three core components:



## As a result of participating in SKYE Clubs, members have:

- improved competencies in the areas of project management, self and group management, communication, innovation and creativity, and technical vocations.
- improved leadership and life skills.
- improved work readiness skills and business acumen.
- improved positive self-concept, self-efficacy and agency.
- an opportunity to positively contribute to their community.
- increased likelihood of gaining decent, durable employment or starting their own business.
- a reduced likelihood of engaging in risk-taking behaviours.

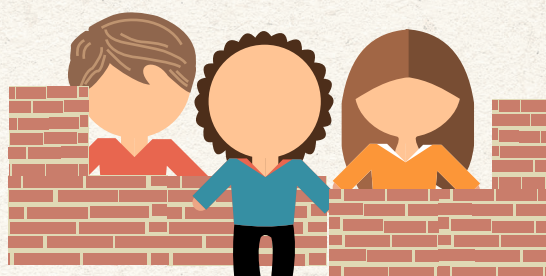
## Who's Involved?

SKYE Clubs are facilitated by trained volunteer Leaders from the community that provide members with a safe space to learn and grow. Leaders provide coaching and mentoring, as well as model positive behaviours. A volunteer business mentor also an important part of the SKYE Club program; business mentors offer mentoring, guidance, and practical advice to SKYE Club members as they develop business plans and social entrepreneurial projects.

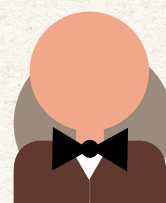
## Community Learning Projects

SKYE Club members undertake three to four projects each year. These projects are SKYE Club's main learning tool and serve multiple purposes:

- bringing social change to the community
- applying skills learnt in meetings to consolidate new behaviors and life-skills
- developing new ideas to create livelihood opportunities.



SKYE Leader  
(Volunteer)



Business Mentor  
(Volunteer)

World Vision



# Human Resource Structure:

There are three key roles that support the SKYE Club program. These include 2-3 volunteer SKYE Club Leaders from the community who supported by a SKYE Club Facilitator who is generally based out of a World Vision Area Development Programme (ADP) office. Business Mentors also provide business mentoring, coaching and support to either individual or multiple SKYE Clubs in their area.

