

World Vision: Experience Sri Lanka



trip highlights

- Raise awareness and funds for World Vision
- Visit World Vision Development Project Sites
- Visit Sigiriya Rock Fortress
- Sightsee at the hill capital of Kandy and the Royal Botanical Gardens
- View large herds of Elephants on a jeep Safari of Uda Walawe National Park
- Train ride through the tea plantations
- Explore the seaside port of Galle and it's Dutch Fortress



Trip Duration	11 days	Trip Code: WV2
Grade	Adventure touring	
Activities	Charity Challenge	
Summary	10 nights hotel	

Supporting Your Cause

More than one billion people around the world live in poverty and struggle every day just to survive. For six decades, World Vision has worked with disadvantaged communities at a grassroots level to fight poverty and injustice. They do this through:

Community development: World Vision partners with communities on long-term projects that enable them to gain the knowledge, skills and resources needed to break the cycle of poverty and sustainably manage their own development.

Humanitarian and emergency relief: World Vision has staff and supplies positioned around the globe to respond to immediate needs. They also help communities recover from disasters and plan for and reduce the impact of future setbacks.

Tackling injustice: World Vision engages governments, institutions and the public to address the underlying causes of poverty. They aim to empower communities to speak up for their rights and influence local and global change.

Engaging the community: World Vision informs members of the global community about the causes of poverty and challenges them to be involved in efforts to alleviate it.

World Vision engages with community leaders and members to determine what their shared priorities are, and may address needs in areas including food and agriculture, healthcare, water and sanitation, education, economic development, child protection and reducing disaster risks. Projects are funded from a range of sources, including public and corporate donations and grants from governments and multilateral organisations.

Your Huma Challenge

Thank you for your interest in our World Vision: Experience Sri Lanka trip. Huma Charity Challenge is a division of the worldwide adventure travel company World Expeditions. When joining a Huma Charity Challenge you embark on a remarkable journey to discover your inner philanthropist as you raise money for a Charity that is important to you. At the same time you take on the challenge of fundraising and partake in an adventure to discover new worlds, new landscapes and new cultures ... We are passionate about off-the-beaten track travel experiences as they provide travellers with the thrill of coming face to face with untouched cultures as well as wilderness regions of great natural beauty. Our itineraries are well researched, affordable and tailored for the enjoyment of small groups. Our itineraries provide the very best travel experience, designed by people with vast local knowledge who share our vision of authentic exchange and real exploration with a responsible travel approach at the core.



World Vision: Experience Sri Lanka

Experience the wonders of this mystical country whilst helping raise much needed funds for World Vision and see first hand work being done.



Charity Challenge Payments

Joining Australia Travel Cost Twin Share:	\$4790
Non refundable registration fee:	\$200
Optional Single Supplement:	\$630
Minimum charity donation/fundraise:	\$3500

All prices are per person

Huma Challenge does not require single travellers to pay a surcharge for travelling alone. We will arrange for you to share accommodation with another traveller of the same gender and if we can not match you up we will provide a single room at no extra charge. If you prefer not to share a single supplement is payable to guarantee your own room. The cost of the single supplement is listed above.

Trip Dates

2018 04 Mar - 14 Mar

Countries Visited:
Sri Lanka

Visas:
Yes*

Vaccinations:
Please consult a travel vaccination specialist for up to date information

Group Size Min:
10

Group Size Max:
20

Singles:
A single supplement is available for this trip*

Leader:
Expert Local Leader & Escort

*Ask our staff for more information

What Impact Will My Fundraising Have?

World Vision is proud to be supporting many life-changing programs in Sri Lanka, and the funds you raise as part of your Visit Sri Lanka 2017 will be helping to ensure the programs are successful in:

- Assisting children, their families and communities with better access to healthcare, education, food production, income-generating activities and other basic needs
- Providing training in innovative agricultural methods to introduce new crops, increase yields and help farmers grow crops in inhospitable terrains
- Helping community-based organisations provide their citizens with opportunities for active involvement in their economic and social development

Your Adventure

A land of misty highlands and tea plantations, dense jungles and national parks, Sri Lanka is a truly amazing country to explore. We start with a visit to a World Vision project before heading to the hill town of Kandy with its splendid botanical gardens and lush tea plantations. We then travel to the colonial hill station of Nuwara Eliya before we continue by train to Ella through the tea plantations before arriving at Uda Walawe National Park. Our trip ends with a visit to the Southern coast staying at the colonial port city of Galle.

Fundraising Options

There are a number of ways you can approach your fundraising:

1. Simply donate the amount yourself, as you would any other holiday (although this will be a LOT more memorable than any other holiday!).
2. Fundraise some or all of the amount. When you do so, any donations that others make towards your challenge will be tax deductible. If you'd like to fundraise for your trip but don't know where to start, our professional fundraisers will provide you with the support and resources to make it easy and stress-free.

Child Protection Policy

All participants on this trip will be required to complete a Criminal Record Check through World Vision. This check is to ensure that members of the group do not have a history of child-related offences, and is mandatory in order to visit World Vision's projects on this trip.

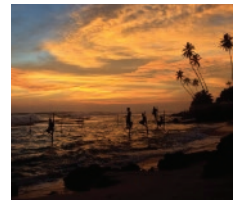
Online Fundraising Portal

Upon registering for this trip, World Vision will provide you with a link to join the Everyday Hero group that has been set up for this Sri Lanka trip so that yourself and other participants can create your own individual pages and start fundraising. This process will mean that all funds will be automatically transferred to World Vision.



World Vision: Experience Sri Lanka

Experience the wonders of this mystical country whilst helping raise much needed funds for World Vision and see first hand work being done.



Responsible Travel

The environments we travel through are fragile. It is our responsibility as visitors to minimise the impact of our presence. World Expeditions were the proud recipients of the inaugural Australian National Travel Industry's Environmental Achievement award for our Responsible Travel Guidebook. This detailed guide to responsible & sustainable travel is provided to all World Expeditions clients before they travel. Please ask your consultant if you have not received your copy of our award winning book. Alternatively, you may like to download a copy from our website www.humacharitychallenge.com

Adventure Travel

By its very nature Charity Challenges involve an element of the unexpected. In remote and developing countries do not expect standards you are used to at home. Remote areas are sometimes unpredictable and itineraries may be altered. To get the most out of your adventure it is important that you are suitably fit, flexible, positive and eager to take on all the challenges that arise. If you are uncertain about your suitability for this trip we recommend that you speak with your charity representative or one of our team.

Important Note

These trip notes represent the most current information for this itinerary, and may supersede any other supplied information, including but not limited to the itinerary and price. The itinerary should be seen as a guide only. This itinerary may change at any time due to inclement weather, forces of nature and other circumstances beyond our control.

Itinerary at a Glance

DAY 1	DEPART AUSTRALIA
DAY 2	SIGHT-SEEING IN COLOMBO
DAY 3	VISIT WORLD VISION PROJECT IN NAWAGATHTHEGAMA
DAY 4	VISIT SIGIRIYA ROCK
DAY 5	SIGHT-SEEING IN KANDY
DAY 6	VISIT WORLD VISION PROJECT IN WALAPANE
DAY 7	TRAIN RIDE THROUGH TEA PLANTATIONS
DAY 8	SAFARI UDAWALAWE NATIONAL PARK
DAY 9	VISIT SOUTHERN SRI LANKAN COASTLINE
DAY 10	SIGHT- SEEING IN GALLE AND DRIVE TO COLOMBO
DAY 11	ARRIVE AUSTRALIA

what's included

- International airfares including fuel and tax surcharges
- Trip escorted by World Vision representative
- Accommodation in good quality hotels
- All meals included
- Airport transfers
- All internal transport by air conditioned deluxe private vehicle
- English speaking local leader
- Game drives by private jeep with animal tracker
- All sightseeing and site entry fees as listed

No local payments policy: Local cash payments are becoming increasingly popular with many operators. The policy seems to benefit the tour operators, more than the local economies or travellers, as it avoids local taxes and transfers the cost and risk of cash handling to travellers. This policy is in accordance with our Responsible Travel practices. For further information about our Responsible Travel Practices, please refer to our Responsible Travel Guidebook.

Detailed Itinerary

DAY 1 Depart Australia

After all the planning and preparation the wait is finally over! Please make your way to your Australian gateway airport for your flight to Sri Lanka. Flight details will be sent once you register. On arrival in Colombo you will be met by our guide and transferred to your group hotel.

Catamaran Beach Hotel, Negombo

meals: NIL

DAY 2 Sight-seeing in Colombo

This morning we will meet in the hotel lobby for a group meeting and trip briefing before we head out to visit the sights and sounds of Colombo.

Colombo, the capital of Sri Lanka, has a long history as a port on ancient east-west trade routes, ruled successively by the Portuguese, Dutch and British. That heritage is reflected in its architecture, mixing colonial buildings with high-rises and shopping malls. The imposing Colombo National Museum, dedicated to Sri Lankan history, borders sprawling Viharamahadevi Park and its giant Buddha.

Catamaran Beach Hotel, Negombo

meals: B,L,D



huma
charity
challenge

World Vision: Experience Sri Lanka

Experience the wonders of this mystical country whilst helping raise much needed funds for World Vision and see first hand work being done.



DAY 3 Visit World Vision Project in Nawagaththegama

We will spend the morning visiting two World Vision projects in the North Western province of Sri Lanka.

In the first project we will visit, meet families involved in the kitchen garden project and hear how they have learnt new organic farming practices and in many cases are now fully self-sufficient, growing the vegetables and fruits they require to sustain their family! Learn about the farming techniques used, and how access to diversified crops has improved nutrition.

The second project we will visit focuses on livelihoods and strengthening the long-term prospects of small to medium sized businesses. Meet with business owners who have been provided with access to affordable finance, business and marketing training, mentoring and coaching, which in turn, have all helped owners to grow their businesses!

In the afternoon we continue our drive 120 kms approx 4 hours to our accommodation in Dambulla, ready for our sightseeing day at Sigiriya.

Rangiri Dambulla Resort, Dambulla

meals: B,L,D

DAY 4 Visit Sigiriya Rock

This morning we drive 22kms approx 1 hour and we visit Dambulla Cave Temple famous for its wall paintings, Statues of Lord Buddha and deities among which lies a 47ft recumbent Buddha. We will climb Sigiriya Rock Fortress which was built by king Kasyapa in the 5th century A.D. as a royal citadel. In a sheltered pocket, approached by a spiral stairway, are the famous frescoes. The summit of the rock, with an area of nearly one hectare was the site of the palace, the outer wall of which was built on the very brink of the precipice. The UNESCO - sponsored Central Cultural Fund has restored Sigiriya's 5th century Water Gardens to their former glory.

Rangiri Dambulla Resort, Dambulla

meals: B,L,D

DAY 5 Sight-seeing in Kandy

After breakfast leave for Kandy, the drive is approx 3 hours.

Kandy is located in central Sri Lanka. It's set on a plateau surrounded by mountains, which are home to tea plantations and biodiverse rainforest. The city's heart is scenic Kandy Lake), which is popular for strolling. Kandy is famed for sacred Buddhist sites, including the Temple of the Tooth (Sri Dalada Maligawa) shrine. After our hotel check in we visit the local Spice Garden to understand the growth and use of spices in the day to day life. We head to the local viewpoint, where we have a bird's eye view of the city below, before heading to the Temple of the Sacred Tooth Relic of Buddha - by far the most important place of worship for Buddhists world over.

Thilanka Hotel, Kandy

meals: B,L,D



World Vision: Experience Sri Lanka

Experience the wonders of this mystical country whilst helping raise much needed funds for World Vision and see first hand work being done.



DAY 6 Visit World Vision Project in Walapane

After breakfast leave for Nuwara Eliya in the hill stations, the drive is approx 4 hours. Nuwara Eliya sits high in the hill country, with picturesque landscapes and temperate climate. It's altitude at 1,868 mts and is considered to be the most important location for tea production in Sri Lanka. The town is overlooked by Pidurutalagala, the tallest mountain in Sri Lanka at 2,524 mts and its prominent peak is easily visible from the surrounding area.

We will then spend half a day visiting World Vision's Area Development Program in the tea district of Walapane.

Here we'll learn about how World Vision's unique Area Development Program (ADP) model works and witness firsthand the incredible projects which the fundraising efforts from our trip are supporting. We will visit a health project which focuses on improving maternal and newborn child health and an education project which is helping to ensure that pre-school and primary school aged children can gain a quality education to help secure their future. If you sponsor a child through World Vision who lives in the Walapane ADP, World Vision can assist in arranging for you to visit your sponsor child.

Glenfall Reach Hotel, Nuwara Eliya

meals: B,L,D

DAY 7 Train ride through tea plantations

This morning we will take the local train through the tea plantations and high hill top views over the plains of Sri Lanka. The scenery from the train is breathtaking! Like a green carpet of tea bushes rolling by, with colorful sari-dressed tea pickers popping out of the sea of green. Arriving at Ella we drive back to sea level and arrive in the afternoon at Udawalawe National Park - approx 2 hours drive.

Grand Uda Walawe Safari Hotel

meals: B,L,D

DAY 8 Safari Udawalawe National Park

With herds of elephants, wild buffalo, sambar deer and leopards, Uda Walawe National Park is the Sri Lankan National Park that best rivals the savannah reserves of Africa. In fact, for elephant-watching, Uda Walawe often surpasses many of the most famous East African national parks. The park, which centres on the 308.2-sq-km Uda Walawe Reservoir, is lightly vegetated but it has a stark beauty and the lack of dense vegetation makes game-watching easy.

We take an early morning Jeep Safari into the Udawalawe National Park mainly to see wild elephants followed by lunch at the local potters village of Mankakda before visiting the Elephant Transit Home.

Grand Uda Walawe Safari Hotel

meals: B,L,D

DAY 9 Visit southern Sri Lankan coastline

After breakfast we leave for Galle - approx 4 hours drive.

The seaside town of Galle sits on the south coast of Sri Lanka. The walled city has stood since the early sixteenth century, through the Colonial periods of the Portuguese, Dutch and British and in our present times is proclaimed as an Archaeological Reserve and has been identified as a living World Heritage Site.

We will break the journey along the coast for a swim and lunch at Mirissa and try to catch the famous Sri Lanka stilt fishermen in action.

Lady Hill Hotel, Galle

meals: B,L,D



**human
charity
challenge**

World Vision: Experience Sri Lanka

Experience the wonders of this mystical country whilst helping raise much needed funds for World Vision and see first hand work being done.



DAY 10 Sight- seeing in Galle and drive to Colombo

This morning we will do a walking tour of the Galle Fortress, a World Heritage Site. Afternoon is free to self explorer.

Late check out of our hotel, before heading to the airport to board your flight to Australia. Flight details will be sent once you register.

meals: B,L

DAY 11 Arrive Australia

This morning we arrive back home in Australia after a life-changing journey to one of the most fascinating countries in the world. What a wild ride !

meals: NIL

This itinerary is subject to change with any modifications in Community regulations as well as Governmental changes and natural circumstances beyond our control.

Country Information

Sri Lanka, formerly Ceylon, is an island republic in the Indian Ocean off the southeastern coast of India. The island is separated from India by the Palk Strait and Gulf of Mannar. Lying between the two nations is a chain of small islands known as Adam's Bridge. The greatest length from north to south is about 440 km (about 273 miles); the greatest width is about 220 km (about 137 miles). The total area is 65,610 square kilometres (25,332 sq miles). The administrative capital is Sri Jayawardenepura (Kotte); and Colombo is the commercial capital and largest city. Sri Lanka's coast, particularly the west, south, and southeast, is palm-fringed and indented by lagoons and inlets. The more rugged northeastern coast contains Trincomalee Harbor, considered one of the best natural harbours in the world. Around 74 percent of the population of Sri Lanka is of Sinhalese descent. The largest minority groups are the Sri Lankan Tamils and the Indian Tamils, which together account for about 18 percent of the population. The remaining population includes the descendants of Moors (Arabs), Burghers (Dutch), Malays, and Veddas. The population is 19.3 million, with the majority living in the countryside and only 23% residing in urban areas. Buddhism was first introduced into Sri Lanka in the 3rd century BC, and is the dominant religion in Sri Lanka (approx. 69 percent of the population). 15 percent of the population is Hindu, 8 percent is Christian, and 8 percent is Muslim. Religion plays an important role in Sri Lanka; a revival of Buddhism was associated with the rise of Sinhalese nationalism. Most public holidays are based on religious festivals. The annual torchlight temple procession, or Perahara, in which ornamentally covered elephants and hundreds of dancers participate, draws thousands of devotees. Pilgrimages also play an important role here. The most important pilgrimage is to the top of Adams Peak. Muslims believe that Adam and Eve lived here after they left the Garden of Eden. Buddhists visit a rock on the peak that they believe contains one of Buddha's footprints. Another important pilgrimage is to the Temple of the Tooth in Kandy, where it is believed that one of Buddha's teeth is enshrined. The official languages of Sri Lanka are Sinhala, or Sinhalese, and Tamil. Sinhala is spoken by 74 percent of the population. Tamil, a Dravidian language of southern India, is spoken by people living in the northern and eastern provinces. English, the official language of the country until 1957, is still widely used.

Climate

Sri Lanka is very much a tropical country with distinct dry and wet seasons and a generally humid climate. However the seasons depend on your location on the island. Our trip operates in the South West where the dry season extends from December to March. Average temperature will be around 27 degrees Celsius in coastal flat areas, 20 degrees Celsius in Kandy and may fall to around 15-17 degrees Celsius in the hills. You should be prepared for cool nights in the hills – as low as 10 degrees Celsius.



World Vision: Experience Sri Lanka

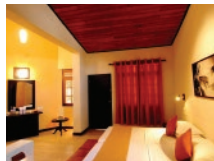
Experience the wonders of this mystical country whilst helping raise much needed funds for World Vision and see first hand work being done.



Dietary Requirements

Provided we are advised in advance of your departure we are able to cater for vegetarian diets and can assist with medically recommended diets (allergies and intolerances). Please ensure you discuss your requirements with us well in advance (at least 1 month prior to your trip) to determine whether we can cater to such dietary requirements on your chosen adventure. Please note that options are likely to be limited in very remote locations or alternatives may be more expensive or unavailable. There may be times when those with special requirements may need to provide their own food. We are unable to guarantee a peanut-free or allergen-free trip, and therefore, we strongly encourage that travellers with life-threatening or severe allergies take all necessary medical precautions to prepare for the possibility of exposure. Passengers must travel with all necessary medications for food allergies and be capable of self-administering these medications.

Accommodation on the Trip



In Sri Lanka we stay at good comfortable 3 star well located Hotels. Most hotels on your trip have free WIFI, a pool and bar, gymnasium.

What You Carry

In your backpack you will need to carry a rainjacket, water bottle, camera gear, valuables and personal items such as sunscreen, lip-eze etc

Equipment Required

There is no specialist gear required for this journey (a comprehensive gear list is provided in the pre-departure information provided on booking).

Vehicles & Safety

During the course of your trip, we will use a variety of vehicles, all which are fit for purpose and the conditions encountered. It should be noted that laws governing transportation safety may differ from those in your home country and on occasion some vehicles may not have seat belts fitted. While game viewing within a national park could be one example. Whilst we do not include animal rides on most of our trips, there are occasions where it may be possible to undertake them optionally and to do so is at your own risk. Note that helmets and professional riding equipment are not available in all circumstances.

What's Not Included

- Aerated & alcoholic drinks
- Items of a personal nature such as phone calls, laundry, etc.
- Travel insurance
- Visa



World Vision: Experience Sri Lanka

Experience the wonders of this mystical country whilst helping raise much needed funds for World Vision and see first hand work being done.



Info Nights

Come and join us on one of our free Info Nights and learn more about your Charity Challenge. Whether you're registered or still deciding whether to take the challenge you'll find these evenings informative and inspiring and are hosted by our most experienced and passionate travel experts and representatives from the relevant charity. Register at www.humacharitychallenge.com

How To Book

To register on this Charity Challenge please complete the registration form and return to Huma Charity Challenge, Attention Fiona Windon.

Email: fiona@humacharitychallenge.com.au

Post: Huma Charity Challenge, Level 5, 71 York Street, Sydney 2000

Otherwise you can make your booking online by using the REGISTER NOW button found at the bottom of the relevant Charity Challenge page on our website www.humacharitychallenge.com

